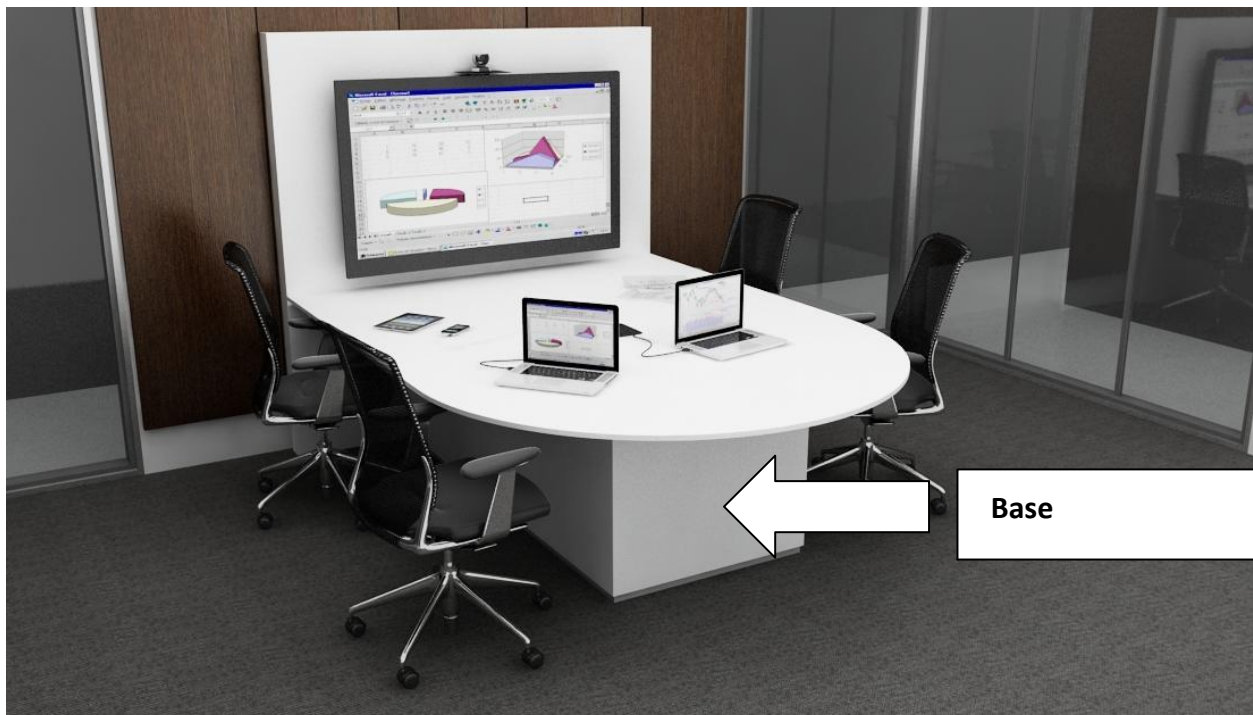


## Installation Instructions: Interconnect Touchdown and Lounge Tables

### Main Components:

1. Base (ships in one piece)
2. Backwall
3. Top
4. Technology
  - a. Switch and mounting Brackets
  - b. 6' Share" VGA Cables (4 or 6)
  - c. Cable Cubby 600
  - d. 12' VGA (for Connection to the Monitor)
  - e. (2) Duplex units with 3-prong plugs
  - f. Multi-plug Power Strip

**Step 1:** Remove Base from Skid and put in place.

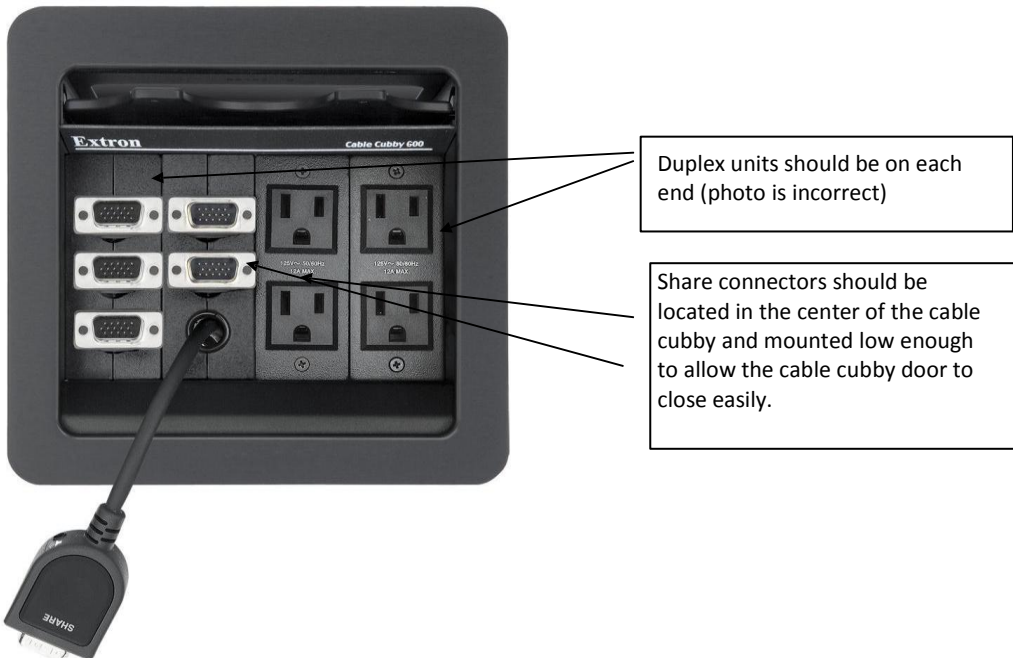


**Step 2:** Attach Backwall to the base using supplied blots.



**Step 3:** Attach top with supplied screws.

**Step 4:** Assemble Cubby Components:





- a. Attach the duplex units to the outside positions in the cubby.
- b. Insert "Share" Cable into the pull-through cable guides and attach in the center of the cable cubby.
- c. Mount the cable cubby in the cutout in the top.

**Step 5:** Attach the Switch box to the underside of the top between the cable cubby location and the Backwall (12" in front of the cubby, centered in the top) using the supplied mounting brackets. Make sure that you mount the box with the VGA connections facing away from the side access panel (you should see the on/off switch).



4-user switch box



6-user switch box

**Step 5:** Connect the VGA connectors to the switch box. (Connect the VGA and audio plugs)



This end of the cable gets attached to the switch.

**Step 7:** Connect the 12' VGA cable to the **output connection** on the switch.

**Step 8:** Connect the other end of the 12' VGA cable to the monitor through the access panel in the Backwall.

**Step:** Turn on the switch (green light goes on). The unit is now ready to go.

